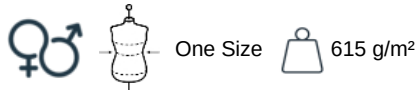


NS012

Unisex-Mütze mit breitem Rand

100 % verantwortungsbewusste Merinowolle. Unisex. In Spanien hergestellt. 10 gg Strick. 1x1 Rippstrick. Gekämmter Faden. Weiches, warmes Material. Mütze mit breiter Krempe. Durchschnittliches Gewicht Größe L : 75g.

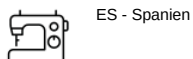


Zusätzliche Informationen

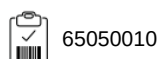
Logistik



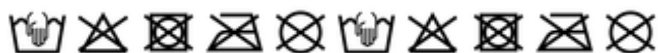
Herkunftsland



Zolltarifnummer



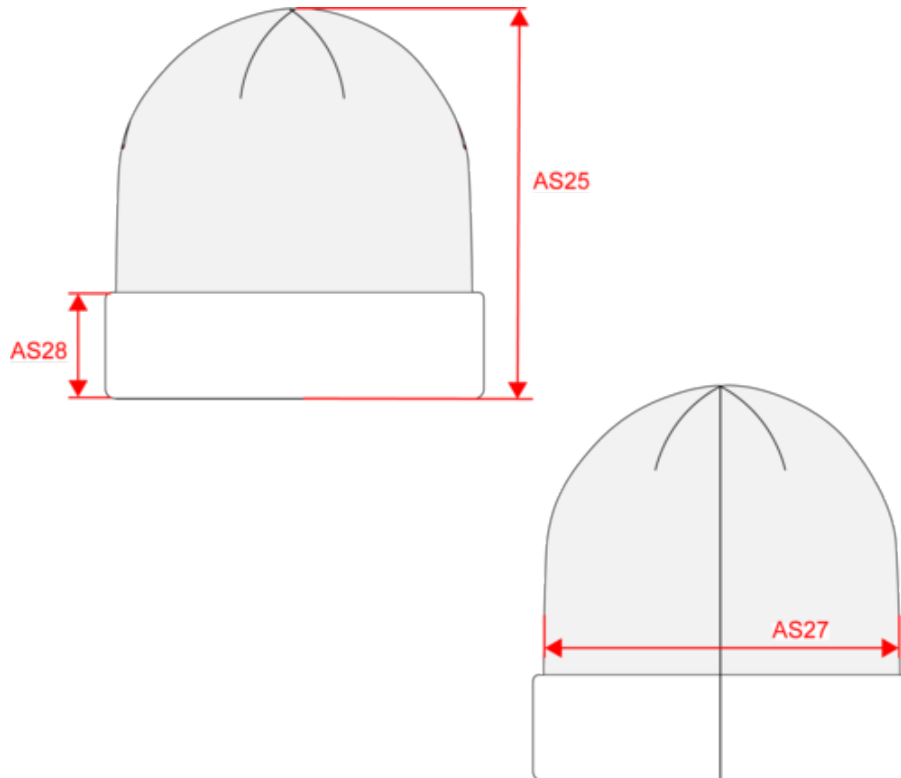
Waschanleitung



NS012

Unisex-Mütze mit breitem Rand

Maße



Measurements in cm	One size
AS25 - Total height at the highest level	22.00
AS27 - 1/2 bottom width	20.00
AS28 - Turn up height	6.00

NS012

Unisex-Mütze mit breitem Rand

Farbinformationen



Black
 RVB : 35,35,37
 Pantone C : Black
 Pantone TCX : 19-4004TCX



Green Tea
 RVB : 103,108,93
 Pantone C : 417C
 Pantone TCX : 18-0515TCX



Hibiscus Red
 RVB : 134,27,47
 Pantone C : 1815C
 Pantone TCX : 19-1656TCX



Ivory
 RVB : 237,230,219
 Pantone C : 7534C
 Pantone TCX : 11-0701TCX



Moon Grey Heather
 RVB :
 Pantone C : Based on 7539C
 Pantone TCX : Based on 16-5101TCX



Navy Blue Heather
 RVB :
 Pantone C : Based on 433C
 Pantone TCX : Based on 19-4020TCX



Parma
 RVB : 184,182,210
 Pantone C : 5295C
 Pantone TCX : 14-3911TCX





Petal Rose
 RVB : 197,159,155
 Pantone C : 7612C
 Pantone TCX : 15-1607TCX



Volcano Grey Heather
 RVB :
 Pantone C : Based on 446C
 Pantone TCX : Based on 19-3906TCX



Wet Sand Heather
 RVB :
 Pantone C :
 Pantone TCX :

Logistik  1  100

Sizes	Width (cm)	Height (cm)	Length (cm)	Net weight (kg)	Gross weight (kg)	Pieces/Box	Pieces/Bundle
One Size	40.00	30.00	60.00	7.60000	8.50000	100	1